



Project number: 2021-1-IE01-KA220-SCH-000027825

## Climate Action and Light Pollution Threat Educational Toolkit

**Age group:** 5-9

**Topics:** biology, environmental education, creativity

**Resource:** International Dark-Sky Association  
([www.darksky.org](http://www.darksky.org))

### Wildlife workbook

**Content:** Images to match animal types, coloring pages, mazes, anagrams, draw a story, write a letter, connect the dots, word search;

**All with short explanations about light pollution and the effect on the wildlife**

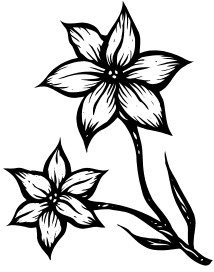
# Wild About Wildlife

Taking a closer look at the consequences of artificial lighting on wildlife

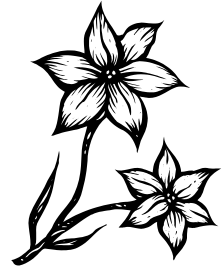
Ages 5 - 9



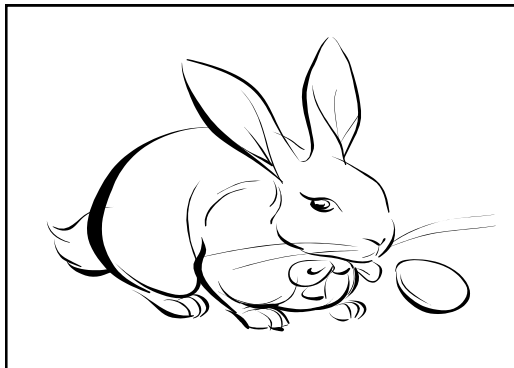
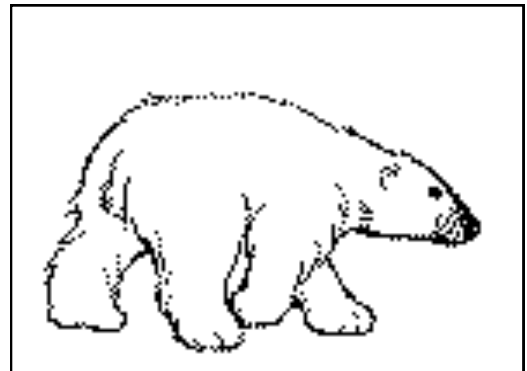
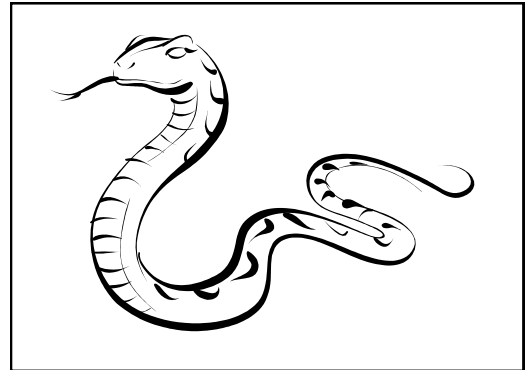
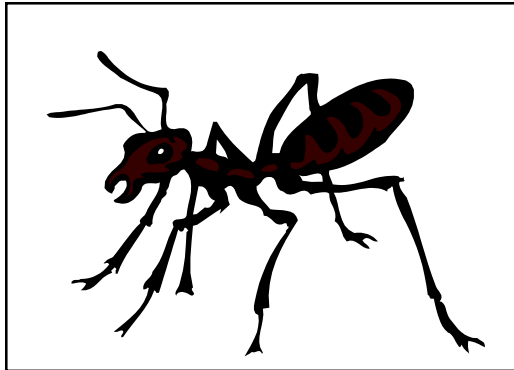
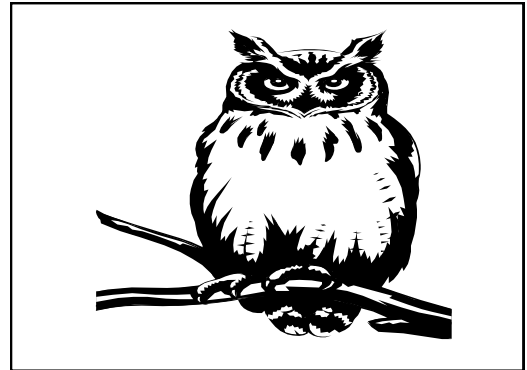
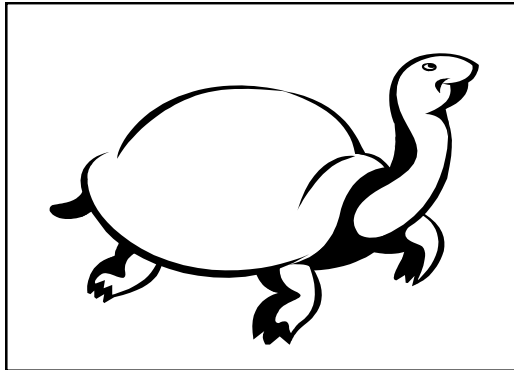
Images by the U.S. Department of Interior, Fish & Wildlife Service



# Matching Fun



Color the animals and then draw a line  
between the two  
reptiles, two birds, two mammals, and



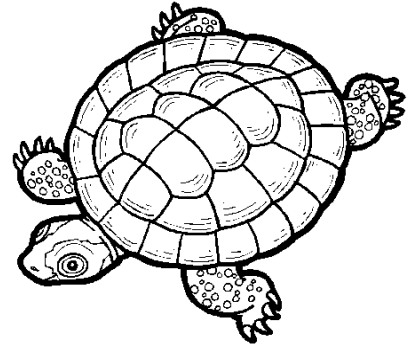
# Color Me Crazy!!

Nocturnal animals and creatures are greatly affected by light pollution. Most become disoriented and confused by the unnatural light. This causes them to wander into traffic and roadways, fly or walk into dangerous situations, or even become easy prey for other animals.

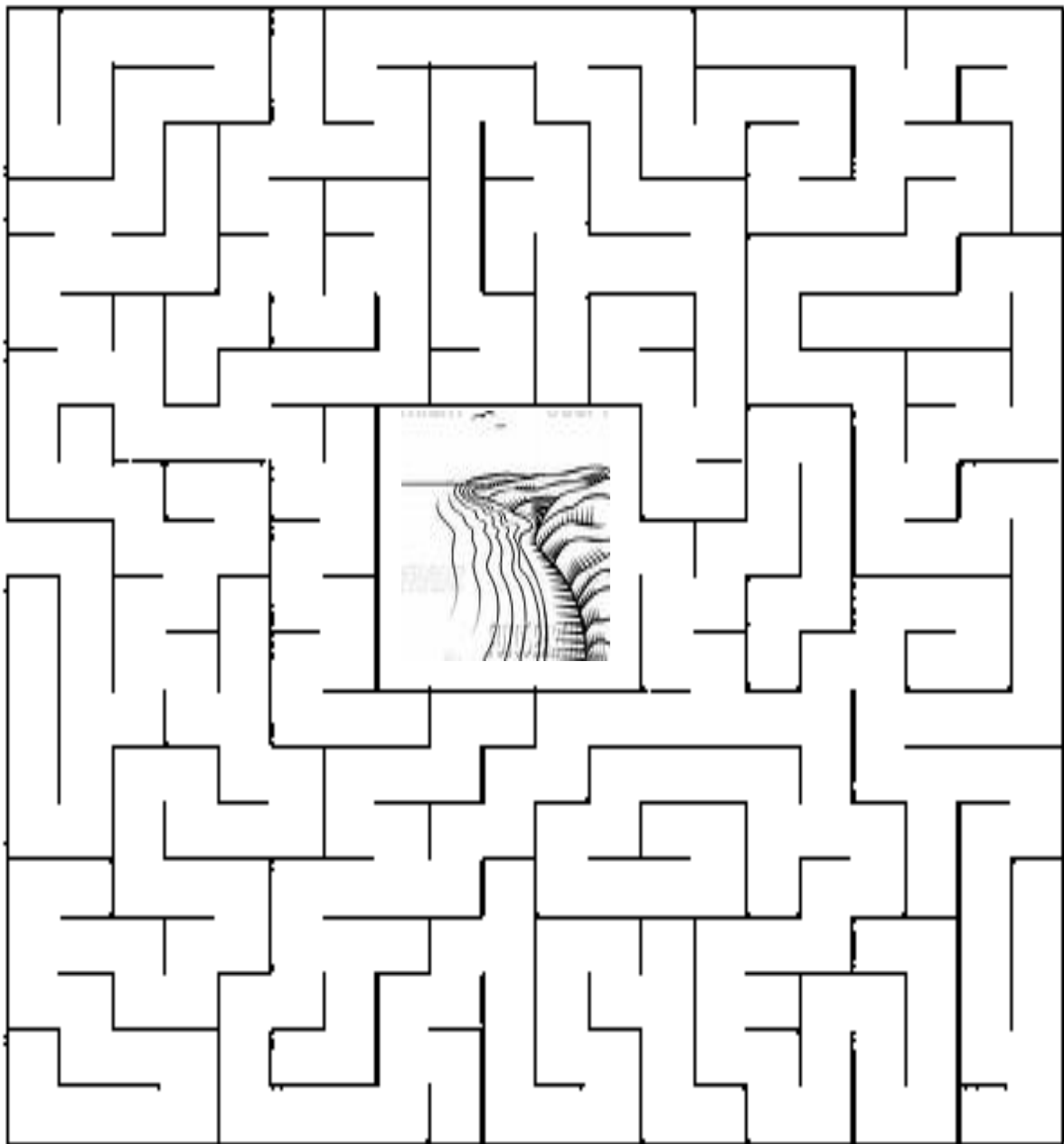


# aMAZEing

Many animals are affected by light pollution. Baby sea turtles, after hatching, often have difficulty finding their way to the ocean due to artificial lighting. They can wander into dangerous situations and are more easily preyed on.



Help this sea turtle find its way home!





# Draw a Story



Draw a picture in each square and tell a story about an animal and light pollution.

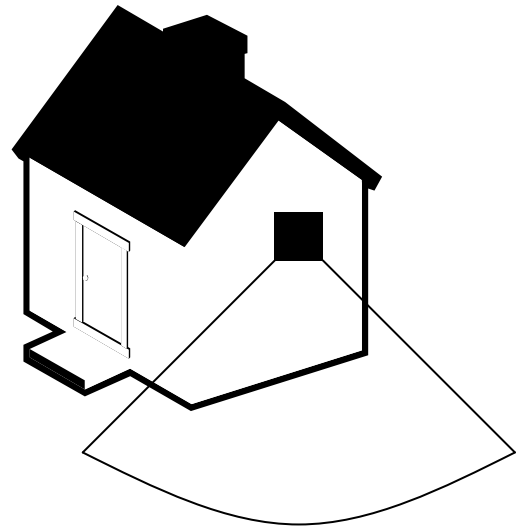
Draw what happens first, second, third, and fourth.

<div data-bbox="690 554 784 648" data-label="Text"><p>1</p></div>	<div data-bbox="1333 554 1427 648" data-label="Text"><p>2</p></div>
<div data-bbox="690 1295 784 1390" data-label="Text"><p>3</p></div>	<div data-bbox="1333 1295 1427 1390" data-label="Text"><p>4</p></div>



# Help!

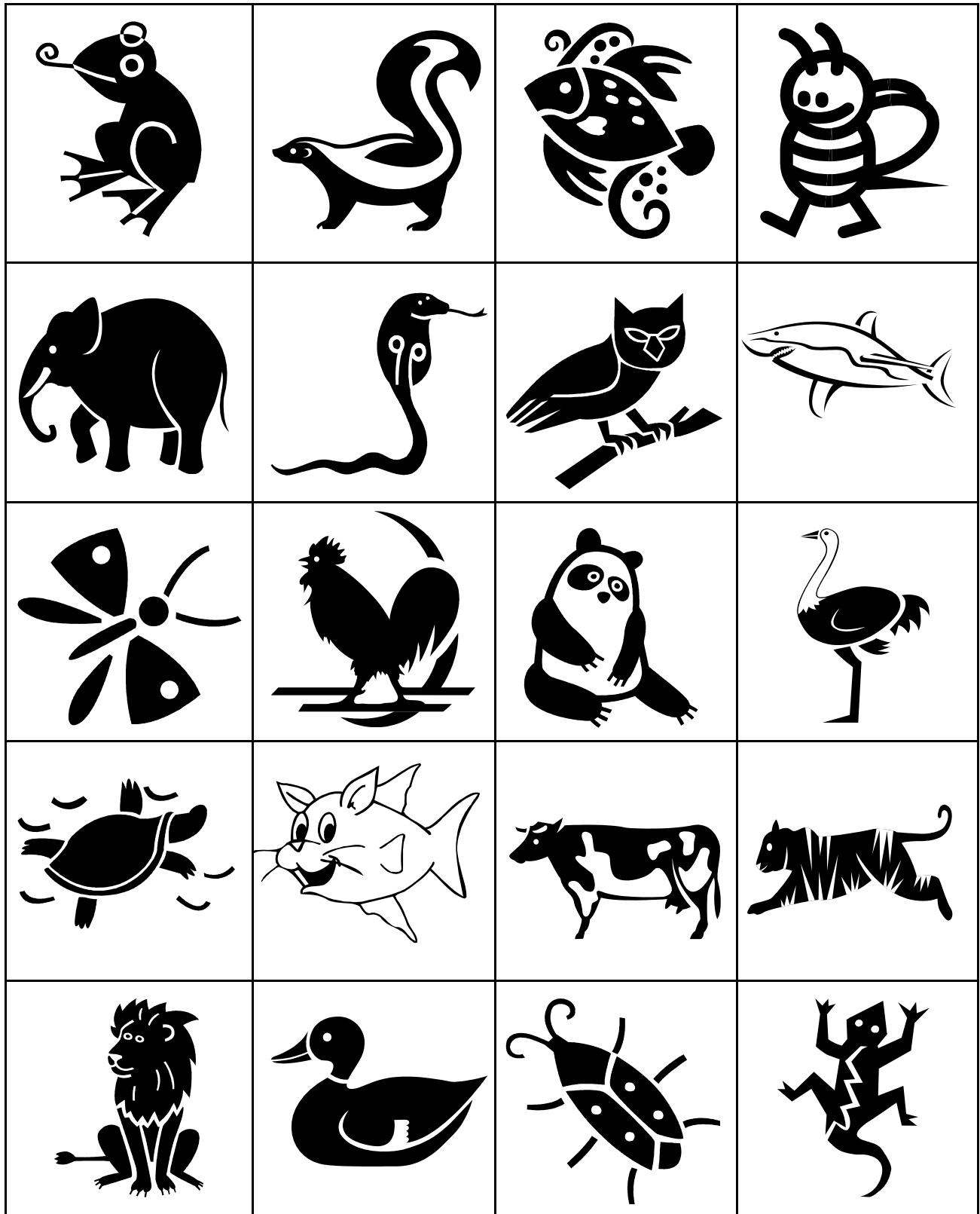
Fred the Frog can't sleep at night because Mr. Brad's flood light shines right in his pond! Write a letter to Mr. Brad asking him to turn down the lights so Fred and his friends can sleep.



Handwriting practice lines consisting of solid top and bottom lines with a dashed middle line. There are 10 sets of these lines for writing a letter.

# Raving Reptiles

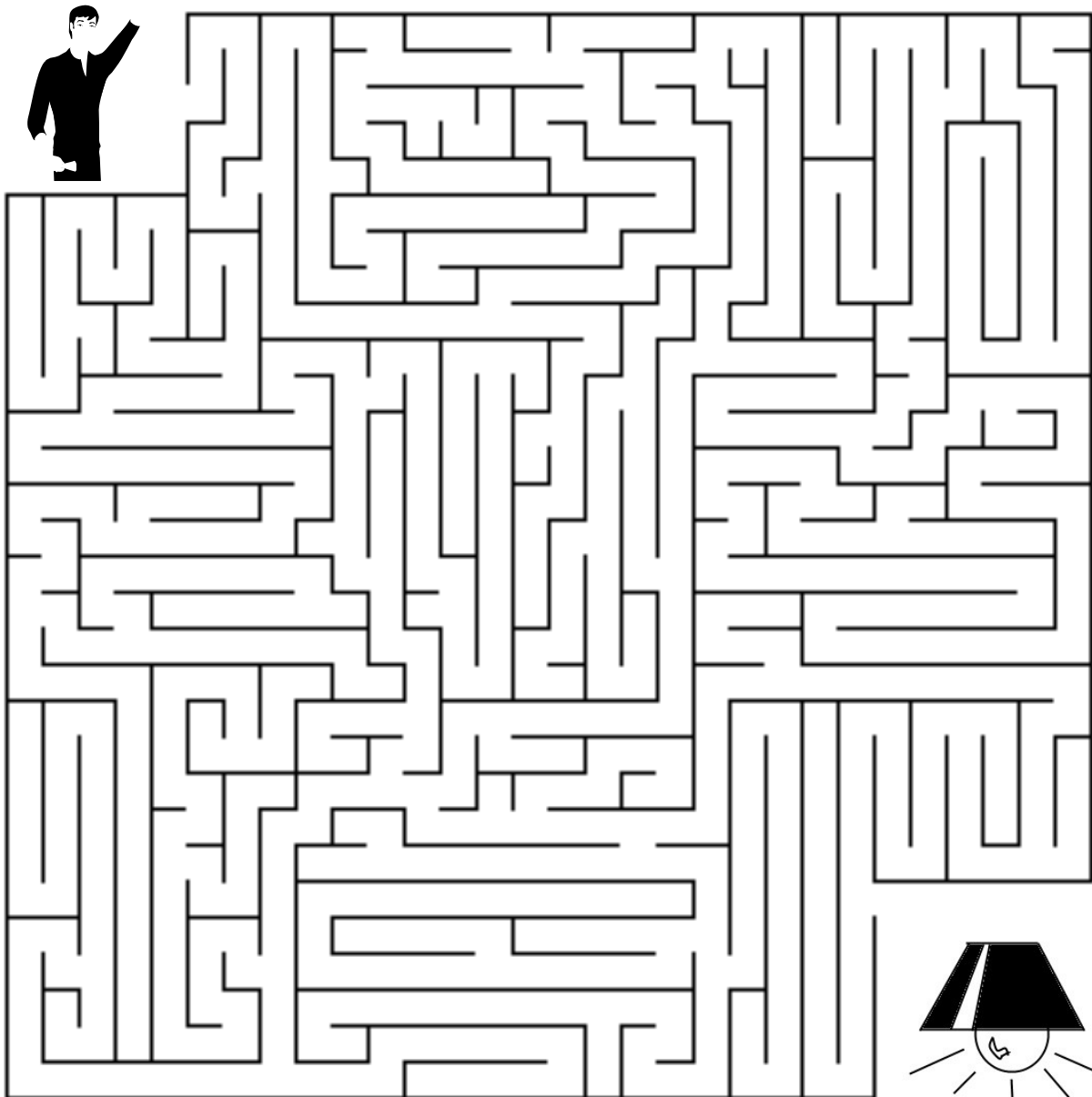
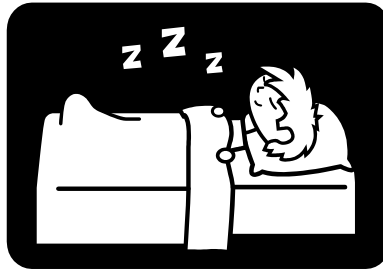
Circle all of the reptiles.

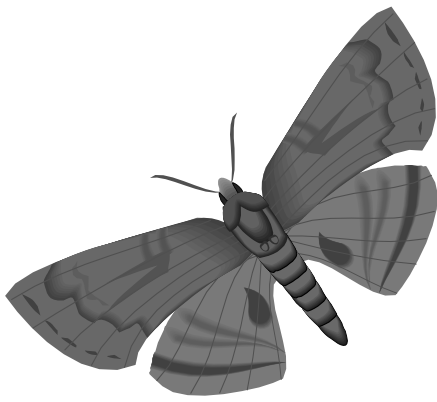




# Sleep Tight

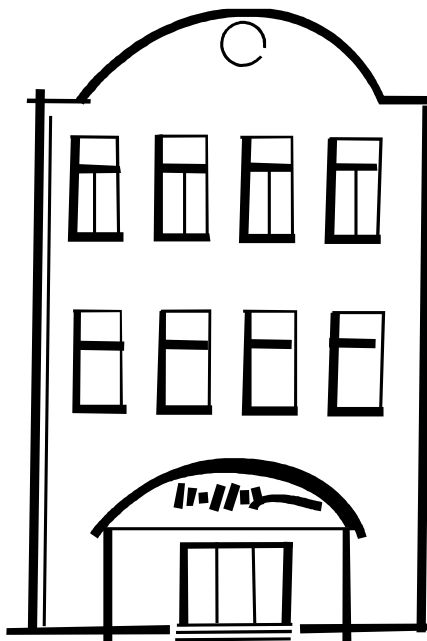
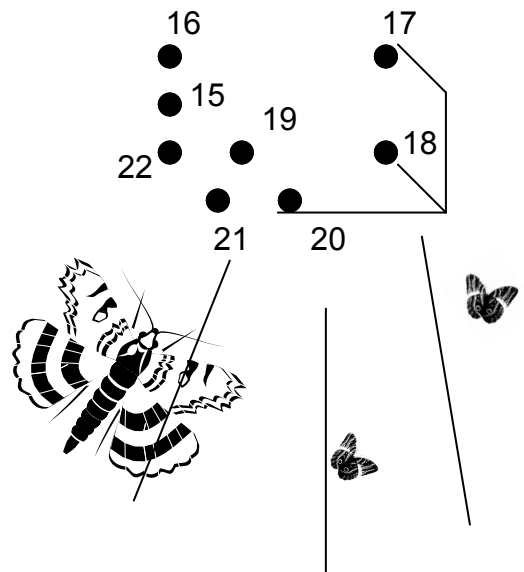
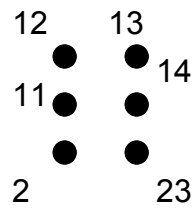
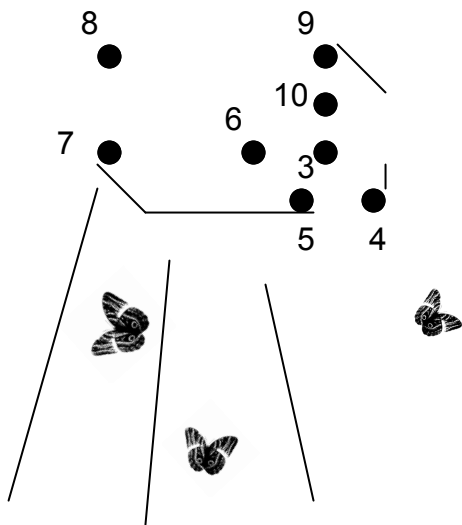
Help! There's too much light in Tommy's room for him to sleep. Help him find the lamp so he can turn it off and get a good night's sleep.



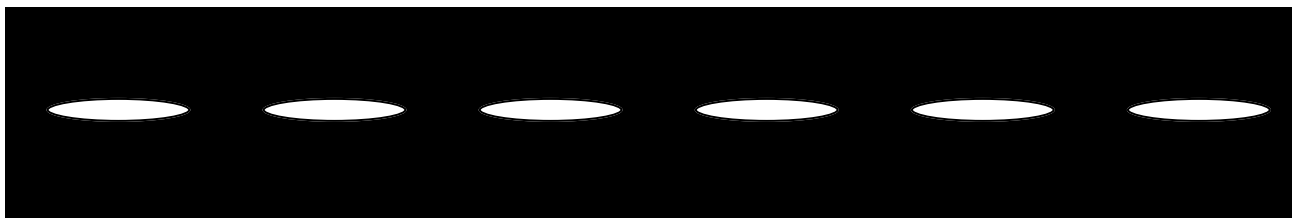


# LOST!

Maddy the Moth's brother Mikey has gotten lost somewhere. Connect the dots to help her find out where.

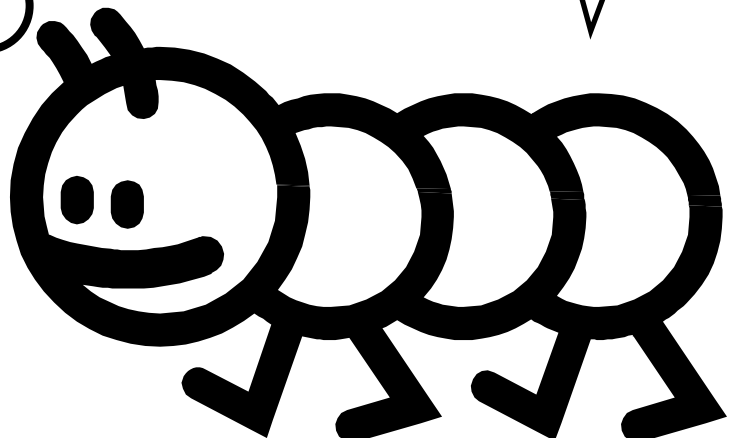
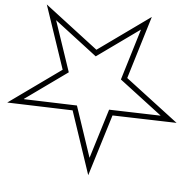


1 ● — ● 24



# Sleep Time!

Draw what you think Katie the Caterpillar dreams about at night.

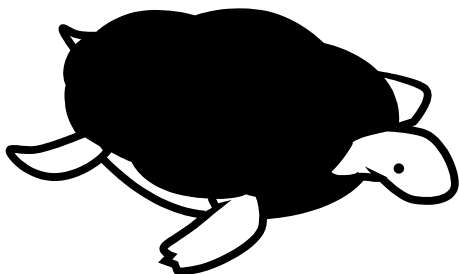
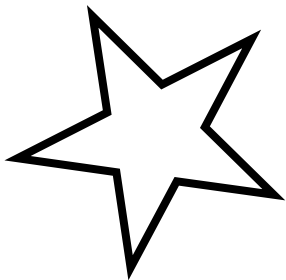




# Animals of the Night Word Search

Find the missing words.

S	K	U	N	K	A	Z	G	R	T
M	S	R	L	T	F	R	O	G	A
N	M	D	M	B	D	T	J	H	S
P	H	B	O	W	L	W	Z	C	T
E	T	C	T	P	T	U	G	R	A
F	U	M	H	E	V	K	D	O	R
Z	R	Q	S	A	F	S	B	L	S
A	T	J	W	T	L	N	A	I	M
R	L	I	L	I	G	H	T	P	Q
U	E	D	E	X	E	N	Y	N	H



Word List:

Bat  
Skunk  
Light  
Stars  
Moth  
Turtle  
Owl  
Frog

